

# WESTMINSTER PRESBYTERIAN CHURCH

## Large Print Bulletin

Knowing Christ.....Making Christ Known

November 10, 2024

9:30 A.M. Traditional



### GATHERING THOUGHT

"Our small increments of time are long enough for loving action and long enough to reveal the endless grace of the Everlasting One who alone gives our fleeting lives meaning."

-Donyelle C. McCray, from *A Surprising God*

# ORDER FOR THE WORSHIP OF GOD

November 10, 2024

9:30 A.M.

**PRELUDE**                      *Nocturne, op. 83, no. 6*                      Max Bruch  
Joe Kauffman, violin; Elena Kauffman, cello; Tim Evers, piano

**WELCOME**    (*Please sign and pass the Friendship Pad in your pew*)

**MINUTE FOR MISSION**      *Shop for Hope*                      Christine Philbin

**CHORAL INTROIT**    *Let All Who Are Thirsty Come*      Taizé Community

**CALL TO WORSHIP**    adapted from Psalm 146

*Leader: I will praise the Lord as long as I live; I will sing praises to my God all my life long.*

**People: Do not put your trust in princes, in mortals, in whom there is no help.**

*Leader: Happy are those whose help is the God of Jacob, whose hope is in the Lord their God.*

**People: The Lord sets the prisoners free; the Lord opens the eyes of the blind. The Lord lifts up those who are bowed down; the Lord loves the righteous.**

*Leader: The Lord watches over the strangers, upholds the orphan and the widow, but brings the way of the wicked to ruin.*

**People: I will praise the Lord as long as I live; I will sing praises to my God all my life long.**

## HYMN #267

*Come, Christians, Join to Sing**(please stand if able)*

1 Come, Chris - tians, join to sing: Al - le - lu - ia! A - men!  
 2 Come, lift your hearts on high: Al - le - lu - ia! A - men!  
 3 Praise yet our Christ a - gain: Al - le - lu - ia! A - men!

Loud praise to Christ our King: Al - le - lu - ia! A - men!  
 Let prais - es fill the sky: Al - le - lu - ia! A - men!  
 Life shall not end the strain: Al - le - lu - ia! A - men!

Let all, with heart and voice, be - fore his throne re - joice;  
 He is our guide and friend; to us he'll con - de - scend;  
 On heav - en's bliss - ful shore his good - ness we'll a - dore,

praise is his gra - cious choice: Al - le - lu - ia! A - men!  
 his love shall nev - er end: Al - le - lu - ia! A - men!  
 sing - ing for - ev - er - more: Al - le - lu - ia! A - men!

## UNISON PRAYER OF CONFESSION

Merciful God, your mercies do not run out. Yet we focus our attention on what we lack, what we long for, what we have yet to possess. Forgive us our sins, the ways we push aside the cries of our neighbor and stop our ears to those who suffer. Forgive our excuses, our pride, our lack of mercy. Open our hearts to righting our collective wrongs. Help us to follow Christ in honoring the poor and vulnerable. Help us build your beloved community where all may flourish...*(time for silent prayers of confession)*

## ASSURANCE OF PARDON

*Pastor: Friends, believe the good news of the gospel.*

**People: In Jesus Christ we are forgiven.**

## RESPONSE #642 *Heleluyan, We Are Singing* (please stand if able)

Heleluyan, we are singing.

Hele, heleluyan. Heleluyan, now and always.

Hele, heleluyan.

## AFFIRMATION OF FAITH Apostles' Creed

I believe in God the Father Almighty, Maker of heaven and earth, and in Jesus Christ his only Son our Lord, who was conceived by the Holy Ghost, born of the Virgin Mary, suffered under Pontius Pilate, was crucified, dead and buried; he descended into hell; the third day he rose again from the dead; he ascended into heaven, and sitteth on the right hand of God the Father Almighty; from thence he shall come to judge the quick and the dead. I believe in the Holy Ghost, the holy catholic church, the communion of saints, the forgiveness of sins, the resurrection of the body, and the life everlasting. Amen.

## THOUGHT FOR CHILDREN



## **DOXOLOGY #606**

*(please stand if able)*

Praise God, from whom all blessings flow, praise him, all creatures here below; praise him above, ye heavenly host; praise Father, Son, and Holy Ghost. Amen.

## **UNISON PRAYER OF DEDICATION** *(from Feasting on the Word)*

Holy God, you are the giver of all good things. As we glorify you in this space, we thank you for the gift of hands to create, art to inspire, and lives to reflect your goodness and mercy. Today we dedicate these new paraments and stoles to your glory, symbolizing the growth and new life that you nurture within our hearts and community. May they inspire us to seek your wisdom, to cultivate faith, and to share your love with all.

Bless those who give, those who labor in love, and all the gifts we offer today, O Lord, that through them, we may be drawn closer to you and to one another. In the name of Christ, who makes all things new.

Amen. *(please be seated)*

## **SCRIPTURE LESSON** 1 Kings 17:8-16 (Pew Bible pg. 282)

Then the word of the Lord came to him, saying, 'Go now to Zarephath, which belongs to Sidon, and live there; for I have commanded a widow there to feed you.' So he set out and went to Zarephath. When he came to the gate of the town, a widow was there gathering sticks; he called to her and said, 'Bring me a little water in a vessel, so that I may drink.' As she was going to bring it, he called to her and said, 'Bring me a morsel of bread in your hand.' But she said, 'As the Lord your God lives, I have nothing baked, only a handful of meal in a jar, and a little oil in a jug; I am now gathering a couple of sticks, so that I may go home and prepare it for myself and my son, that we may eat it, and die.' Elijah said to her, 'Do not be afraid; go and do as you have said; but first make me a little cake of it and bring it to me, and afterwards make something for yourself and your son. For thus says the Lord the God of Israel: The jar of meal will not be emptied and the jug of oil will not fail until the day that the Lord sends rain on the earth.' She went and did as Elijah said, so that she as well as he and her household ate for many days. The jar of meal was not emptied, neither did the jug of oil fail, according to the word of the Lord that he spoke by Elijah.

*Pastor: The Word of the Lord.*

**People: Thanks be to God.**

**HYMN #716**    *God, Whose Giving Knows No Ending*    *(remain seated)*



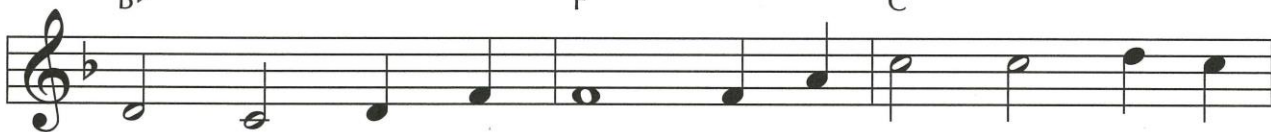
1 God, whose giv - ing knows no end - ing, from your rich and  
 2 Skills and time are ours for press - ing toward the goals of  
 3 Trea - sure, too, you have en - trust - ed, gain through powers your

(D) (Bm)  
 F Dm



end - less store, na - ture's won - der, Je - sus' wis - dom, cost - ly  
 Christ, your Son: all at peace in health and free - dom, rac - es  
 grace con - ferred: ours to use for home and kin - dred, and to

(G) (D) (A)  
 B<sup>b</sup> F C



cross, grave's shat - tered door: gift - ed by you, we turn  
 joined, the church made one. Now di - rect our dai - ly  
 spread the gos - pel word. O - pen wide our hands in

(Bm) (F#m) (Bm) (G) (A) (D)  
 Dm Am Dm B<sup>b</sup> C F



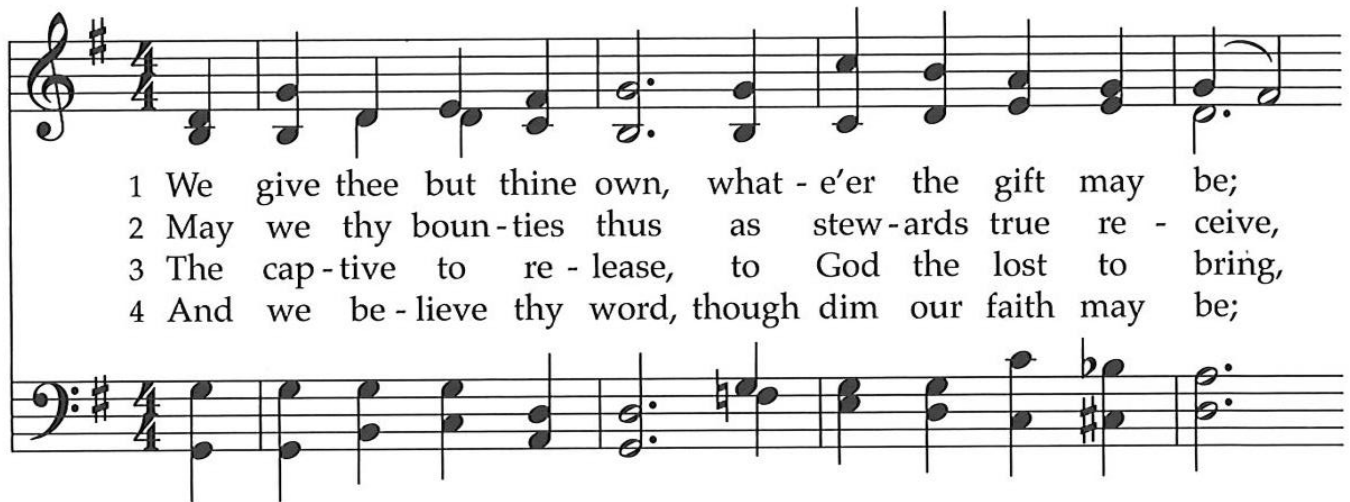
to you, of - fer - ing up our - selves in praise; thank - ful song shall  
 la - bor, lest we strive for self a - lone. Born with tal - ents,  
 shar - ing, as we heed Christ's age - less call, heal - ing, teach - ing,

(Bm) (G) (D)  
 Dm B<sup>b</sup> F

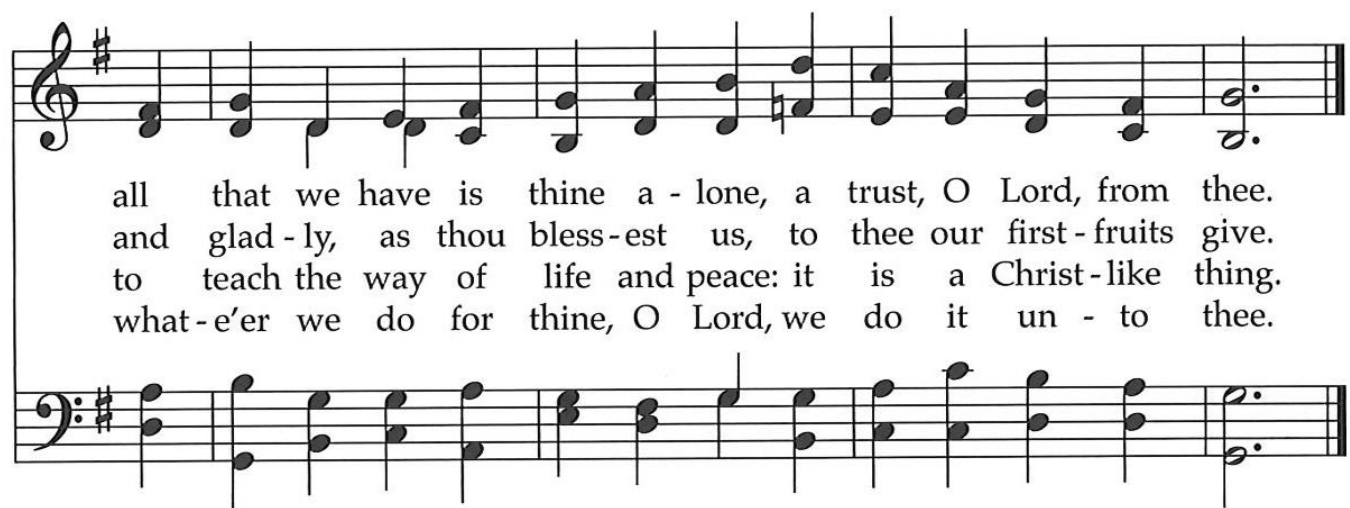


rise for - ev - er, gra - cious do - nor of our days.  
 make us ser - vants fit to an - swer at your throne.  
 and re - claim - ing, serv - ing you by lov - ing all.

## HYMN #708 *We Give Thee but Thine Own (please stand if able)*



1 We give thee but thine own, what - e'er the gift may be;  
2 May we thy boun-ties thus as stew-ards true re - ceive,  
3 The cap-tive to re - lease, to God the lost to bring,  
4 And we be - lieve thy word, though dim our faith may be;



all that we have is thine a - lone, a trust, O Lord, from thee.  
and glad - ly, as thou bless - est us, to thee our first - fruits give.  
to teach the way of life and peace: it is a Christ - like thing.  
what - e'er we do for thine, O Lord, we do it un - to thee.

## BENEDICTION

## POSTLUDE

### Copyright Information

#### **Come, Christians, Join to Sing**

Christian Henry Bateman, 1843; Spanish folk melody; arr. Benjamin Carr, 1824; harm. David Evans, 1927, Public Domain

#### **Heleluyan, We Are Singing**

Muscogee (Creek) hymn; English vers. Brian Wren, 2008; Muscogee (creek) melody; transcr. Carlton R. Young, 2008, © English Vers. & Music Transcr. © 2008 General Board of Global ministries t/a GBGMusik

#### **Leaning on the Everlasting Arms**

E.A. Hoffman, Eric Nelson, © 2015 Birnamwood Publications, CCLI License #2254621

#### **God, Whose Giving Knows No Ending**

Robert L. Edwards, 1961, alt. © Text © 1961, ren. 1989 The Hymn Society; Music Harm. © 1958, ren. 1986 Broadman Press, CCLI License #2254621

#### **We Give Thee but Thine Own**

William Walsham How, c. 1858; Mason and Webb's Cantica Laudis, 1850, Public Domain





Worship Times:  
9:30 a.m.  
11:00 a.m.

**WELCOME VISITORS!** We are glad you are here today. To help us welcome you personally, please sign the *Friendship Pad* with your name, address, email and/or phone number.

If you are interested in knowing more about being a follower of Jesus, have any questions, or desire follow-up information, please speak to one of the pastors. Following worship, they can be found greeting at the doors of the sanctuary.

**LECTIONARY PASSAGES FOR TODAY** are: Ruth 3:1-5; 4:13-17 *and Psalm 127*; 1 Kings 17:8-16 *and Psalm 146*; Hebrews 9:24-28; Mark 12:38-44.

**WE WISH TO THANK** Joe and Elena Kauffman for sharing their gifts with us while helping to lead worship this morning.

**JOURNEY CLASS, 10:45am, Spellman Jr.** We begin a three-week discussion on *Exploring Our Christian Faith Through Indigenous Peoples' Perspectives*, led by Betsy Ballantyne.

\* \* \* \* \*

Ministers of Jesus Christ	All the Members of the Congregation
Pastors	Leah Hrachovec, Eric Dorville, Jon Frost, Ann Hatfield
Pastor Emeritus	Bob Young
Director of Music Ministries	Tim Evers
Associate Director of Music Ministries	Kirsten Santos Rutschman

# WORSHIP INFORMATION

## WEEKLY WORSHIP SCHEDULE

### *Sunday*

9:30am – Traditional worship

11:00am – Contemporary worship with band

5:00pm – Taizé worship in the Chapel

### *Wednesday Morning in the Chapel*

9:10-9:30am – Prayer and Communion worship

**PHONE MINISTRY - Calling in for Worship** is offered for those who want to listen to the 9:30 am service by phone. Contact Nancy Christy at 610-696-3284 for dialing instructions.

**A REMOTE TV MONITOR** is in the Quiet Room (just outside the sanctuary in the west hallway) to view and hear worship in progress for those with restless children or who need to leave the sanctuary.

**HEARING ASSISTANCE DEVICES** are available for worship at the Information Center in the Narthex. Additionally, the sanctuary is equipped with an induction loop system that transmits to hearing aids and cochlear implants with telecoils. **PEW CUSHIONS** also available at the Information Center.

**PRAY GROUNDS ARE LOCATED** along the sides of our Sanctuary and are geared towards young children to engage in items from the cart during services. Families are encouraged to utilize the additional children's materials in the Pray Grounds during worship over the summer.

**LIVE STREAMING** of our services is offered over the internet. A service bulletin for worship may be found through the link on our website or in the Sunday update. We invite you to join us at [westminsterpc.org](http://westminsterpc.org) when you are not able to attend worship.

**FINANCIAL:** Donate from your smart phone. Scan this image using your phone's QR code reader. **TEXT GIVING** is also available. Text keyword "egivewpc" and then your donation amount to 73256 on your mobile device. Click the response link, make selections, hit continue, and add payment information. Contact Sandy Kurek at [skurek@westminsterpc.org](mailto:skurek@westminsterpc.org) for more information.

**PRAYER MINISTRY** members receive a weekly list of prayer requests via email and members include them in their conversations with God. To have a prayer request included in the Prayer Ministry or to become a member, contact Janet Gauger at [gauger.janet@gmail.com](mailto:gauger.janet@gmail.com) or the church office.

**THE SACRAMENT OF COMMUNION** is celebrated the first Sunday of every month in all services. If you desire or know of someone desiring **HOME COMMUNION**, please contact Ann Hatfield, Associate Pastor for Pastoral Care at 610-399-3377 ext. 114.

**THE SACRAMENT OF BAPTISM** is celebrated the **third Sunday of every month**. Our **BAPTISM CLASS** is offered the last Sunday of each month, except December, at 10:30 a.m. Contact the office to register for the baptism class.



# NEWS AND EVENTS

---

November 10, 2024



**Knowing Christ,  
Making Christ Known**

WESTMINSTER PRESBYTERIAN CHURCH  
10 W. Pleasant Grove Rd. West Chester, PA 19382  
610-399-3377 [www.westminsterpc.org](http://www.westminsterpc.org)

## JOURNEY CLASS RESUMES NOVEMBER 10-24

### **EXPLORING OUR CHRISTIAN FAITH THROUGH INDIGENOUS PEOPLES' PERSPECTIVES**

10:45am – Spellman Jr, and zoom. Led by Betsy Ballantyne

Have you heard of the Doctrine of Discovery? What does the PCUSA say about it? Were there any people in the America's at the time of European entry to the new world, and who were they? Come and learn about the indigenous peoples who lived in Chester County, and what actions the Presbyterians of that time took, and what happened to them. Learn about apology, and lament, and during Indigenous People's Month (November), how we can follow Jesus' two commandments- "Love your God with all your heart and love your neighbor as yourself."

### NOVEMBER VESPERS AND DINNER

SUNDAY, NOVEMBER 17

4:00-6:30PM

Join us for this intergenerational opportunity for prayer and worship. This month we will:

- Explore the theme of gratitude in prayer and worship.
- Help hang the greens for the Christmas season on the exterior of the church building.
- Share a meal together.

To register, type the following in your browser so we can plan for the meal accordingly: <https://bit.ly/3NYKPFL>.

### STEPHEN MINISTERS – HERE FOR YOU!

If you or someone you know is experiencing stress, anxiety, grief, health issues, separation, or loneliness, Westminster's trained Stephen Ministers are ready to offer support via telephone calls, virtual technology, or one-on-one, in-person visits. If life feels out of control, you may find it beneficial to speak and pray with a Stephen Minister. We are here for you, and you do not have to walk alone. If you are interested in learning more about the Christ-centered, compassionate care available through Westminster's Stephen Ministry program, please contact Pastor Ann Hatfield at [ahatfield@westminsterpc.org](mailto:ahatfield@westminsterpc.org).

# Campaign Sign Recycling Event! 2024

Bring your campaign signs for collection and recycling!

**East Whiteland Township**  
209 Conestoga Road  
Frazer, PA 19355  
**Friday Nov. 8 to  
Monday Nov. 18**

**SECCRA Landfill**  
219 Street Road  
West Grove, PA 19390  
**Friday Nov. 8 to  
Monday Nov. 18**

**Uwchlan Township**  
715 North Ship Road  
Exton, PA 19341  
**Tuesday Nov. 5 to  
Monday Nov. 18**

**Cain Township Building**  
253 Municipal Drive  
Thorndale, PA 19372  
**Tuesday Nov. 5 to  
Monday Nov. 18**

**Recycling Services Inc. (RSI)**  
365 Elm Street  
Pottstown, PA 19465  
**Saturday  
Nov. 23 9am-1pm**



 **Keep  
Chester County  
Beautiful**  
KEEP PENNSYLVANIA BEAUTIFUL AFFILIATE





## CHRISTMAS CONCERT

Join us for our 34th annual Christmas concert! Our Chancel Choir returns to perform with a full orchestra. Concerts last approximately one hour. Tickets are free but are required to avoid overcrowding. Your financial gifts help make these concerts possible.

This year ticket requests will be **online only** through TicketLeap. There is a limit of 6 tickets per family. If there are any groups who are interested in more than 6 tickets, please contact the church office. Unused tickets will be released 15 minutes before the program begins. You can still enjoy the concert by watching the live stream concert at 3 pm on Sunday, December 15. The link to order tickets is available on our website.

### **Concert schedule this year:**

Saturday, December 14	2 & 5pm
Sunday, December 15	3 & 6pm

Childcare for children 4 and under is available at 2 pm on December 14 and 3 pm on December 15 by reservation only. Please contact Mary Maina, our childcare coordinator at [childcare@westminsterpc.org](mailto:childcare@westminsterpc.org) if childcare is needed.

## WESTMINSTER'S GIVING TREE IS ONLINE!

The need for gift donations is even greater this year and we need your help to share God's love at Christmas! The Gifts for each organization are posted on separate links including:

Domestic Violence Center, Family Promise, and Bridge of Hope.  
**[bit.ly/2024GivingTree1](https://bit.ly/2024GivingTree1)**

Migrant Ministries - **[bit.ly/2024GivingTree2](https://bit.ly/2024GivingTree2)**

Pocopson Nursing Home - **[bit.ly/2024GivingTree3](https://bit.ly/2024GivingTree3)**

Simply copy the link to a browser, sign up for the gifts you wish to purchase, and follow the directions provided.

Please drop off your gifts in the Narthex on Sunday, December 1 and Sunday, December 8. We will be delivering the gifts on Wednesday, December 11, so please let us know if you need to make other arrangements for drop off.

Please take time to visit these links with your family & friends and help to make this holiday season special for those in need. For questions or assistance with gift delivery please contact [Angela Emrich ang.emrich@gmail.com](mailto:ang.emrich@gmail.com) or [Debbie Zakarian dzakarian@verizon.net](mailto:Debbie.Zakarian@verizon.net).



## WPW BIBLE STUDY

All women are always welcome to join us for this monthly Horizons Study. Pastor Leah Hrachovec will be leading November's lesson 3 Food Justice from the study book Let Justice Roll Down: God's Call to Care for Neighbors and All Creation. Lesson 3 Food Justice Scriptures are from 9 books on the Bible.

\*Lessons are all inclusive so feel free to join us when you're able (Monday & Wednesday groups cover the same lesson so no need to attend both).

Monday, Nov. 11 (always 2nd Monday of the month): Room 414 The Site

Wednesday, Nov. 13 (always 2nd Wed of the month): Room 414 The Site.

\*Also available to join via zoom. Books are \$12.

Contact Sue Bruegel at [suebrue@verizon.net](mailto:suebrue@verizon.net)

Or for Wed study Rhoda McNitt at [rhodamcnitt@verizon.net](mailto:rhodamcnitt@verizon.net)



## HELP DECORATE OUR WPC FAMILY CHRISTMAS TREE

The Christmas tree next to Spellman Jr is now designated as our Family Christmas Tree. The tree will be blessed after the Family Vespers Service

on November 17 and will be ready for Children and Youth to decorate it!

Beginning on November 17 after Vespers, and throughout the Advent season, you are invited to bring in an ornament that you have made, purchased, or brought from home and add it to the tree. There will be hanging labels to add to the ornament if you like.

Questions? Contact Gail Lee [pleeglee@comcast.net](mailto:pleeglee@comcast.net)

## ANNOUNCEMENTS

### **Bag lunch date change to November 18**

Normally we meet the second Monday of the month; however, this month the second Monday is Veterans Day. So pack your lunch on Monday, November 18, and join us in Spellman at noon to share some fellowship with friends. All are welcome.

**The Archives Committee** invites you to walk down the office hallway and see the pictures of Westminster's seven past head pastors on the Heritage Wall. Also be sure to see the Spellman Hall display case describing the Sanctuary's stained glass.

**Westminster's Library**-Please visit the library to see our "Giving Thanks" display. While there, feel free to check out any books or DVDs of interest. Two Westminster members' works are on display, Margaret Yarosh (author) and Terry Hawkins (illustrator).

**Tuesday Fellowship, November 12**, join us at 9:30 in Spellman Jr. for fellowship, coffee/tea, and treats. Pastor Jon's presentation *Narrative Lectionary 101* will begin promptly at 10:00am. The Narrative Lectionary (NL) is a four-year lectionary cycle developed in 2010 by professors out of Luther Seminary in St. Paul. Each year, the NL tells the story of the Bible from September through Pentecost. At Westminster, we are planning to journey with the NL in worship beginning in January of 2025. Come learn about the NL and discover how it is both similar and different from other lectionary cycles as well as discover why an increasing number of congregations from various denominations are adopting it. For Zoom info contact Dave Goodale at [dbgpharma@gmail.com](mailto:dbgpharma@gmail.com).

**The annual *Shop for Hope*** event is returning to WPC on **Sunday, December 8**, from **10:30 AM to 12:30 PM** in Spellman Hall. Join us to shop for unique and meaningful gifts for everyone on your list, while supporting partner ministries and spreading hope this Advent season. As you browse this year's market, children can enjoy festive music, crafts, and tasty treats too! We look forward to seeing you there!

**The West Chester Senior Center** is seeking healthy snack/meal products they can set out on tables for their community. The items must be shelf-stable or remain fresh for a few days with a minimum of refrigeration. There are no minimums or limits to the quantities. Pick up is Wednesday, November 13 at 9:30 am in the front parking lot or under the portico. Questions? Contact Gail at [tanzolaseymour@gmail.com](mailto:tanzolaseymour@gmail.com).

### **TODAY!! Footsteps and Paws Walking Group**

2:00 PM this afternoon at Newlin Grist Mill Park.

Please meet Hike Leaders Tim & Anne Jaques at the Parking Lot, just off Baltimore Pike (Route 1), on Sunday November 10, 2pm at Newlin Grist Mill, 219 S Cheyney Rd, Glen Mills, PA 19342. **Please consider joining our online group, Westminster Footsteps in TeamReach app.** Install TeamReach on your iPhone or Android and Enter code WPCFootsteps. Well behaved Dogs on leashes are welcome to walk with us.

**Turkey Ton Challenge! 9am-12pm Sunday, Nov. 17 under the Front Portico.** Support our annual turkey drive! We're collecting turkeys, turkey breasts, hams, and whole chickens. All must be frozen. A truck will collect turkeys and will distribute them to families in our community for Thanksgiving. Giant gift cards are welcomed. Questions: contact John Grillo at [johngrillo@yahoo.com](mailto:johngrillo@yahoo.com).

**Thrift Shop** – As Thanksgiving 2024 approaches, and we reflect on our blessings, we recognize and thank our dedicated thrift shop manager and volunteers, and **YOU**, the congregation for your generosity and continued support.

In celebrating Thanksgiving, the thrift shop's holiday hours schedule is as follows:

**OPEN:** Saturday, Nov. 23, 9 a.m.-12 noon, Monday, Nov. 25, 9 a.m.-3 p.m. (workday), Tuesday, Nov. 26, and Wednesday, Nov. 27, 10 a.m.-3 p.m.

**CLOSED:** Thursday, Nov. 28, Friday, Nov. 29, Saturday, Nov. 30

**REOPENING:** Monday, Dec. 2, 9 a.m.-3 p.m. (workday), Tuesday, Dec. 3, Wednesday, Dec. 4, Friday, Dec. 6 with regular business hours 10 a.m.-3 p.m., and Saturday, Dec. 7, 9 a.m.-12 noon.

## FINANCIAL



**Donate from your smart phone.** Scan this image using your phone's QR code reader.

**September 2024**

### **General Fund – Mission and Church Operations**

Year To Date	Actual	Budget	% vs Budget Better/(Worse)
Pledge Giving	\$1,339,061	\$1,193,795	12.2%
Total Revenue	\$1,744,739	\$1,664,991	4.8%
Total Expense	\$1,672,802	\$1,717,335	2.6%
Net Surplus (Deficit)	\$ 71,937	\$ (52,344)	0.0%

#### Offering Figures for 11/03/24 (includes online giving)

General Fund-Sunday Svc/Mailed/Online	\$42,252.57
Disaster Relief	250.00
Sound System	5,000.00
Property Reserve	100.00
Directed Gift	<u>450.00</u>
Total	\$48,052.57

#### Attendance: 11/03/24

In Person	411
Phone	5
Wellington	10
Live Stream	<u>430</u>
Total	866

**FOOD FOR OUR NEIGHBORS**  
**NOVEMBER – CANNED MEAT AND FISH**

**For questions about any of our activities or events, please visit the  
website at [westminsterpc.org](http://westminsterpc.org)  
or call the church office.**

**Calendar for week of November 10, 2024**

**Sunday, November 10**

- 8:30 A.M. Nursery care (109)
- 9:30 A.M. Traditional Worship / WeeConnect 3-4 yrs  
KidsConnect (K-5<sup>th</sup> grade)
- 9:30 A.M. Confirmation Community Gathering (407)
- 10:45 A.M. Journey Class (Spellman Jr.)
- 11:00 A.M. Contemporary Worship (Sanctuary),  
Young Children & Worship (Chapel)
- 2:00 P.M. Footsteps Walking Group (Newlin Grist Mill Park)
- 5:00 P.M. Youth Choir (Music Room)
- 5:30 P.M. Youth Group (Spellman Hall)

**Monday, November 11**

- 9:00 A.M. Thrift Shop workday until 3 P.M.
- 9:30 A.M. Monday Morning Circle (414)
- 5:00 P.M. Property Committee (Spellman Jr.)
- 7:00 P.M. Trustees (Spellman Jr.)

**Tuesday, November 12**

- 9:30 A.M. Tuesday Fellowship (Spellman Jr.)
- 10:00 A.M. Thrift Shop Open until 3 P.M.
- 12:00 P.M. Personnel Committee via zoom
- 6:30 P.M. Youth Ministry Leader Dinner (414)
- 7:00 P.M. Deacon Meeting (Spellman Jr.)
- 7:00 P.M. ASG and CSG Meeting via zoom

**Wednesday, November 13**

- 9:10 A.M. Prayer and Communion Service (Chapel)
- 9:30 A.M. Women's Bible Study (Spellman Jr.)
- 9:30 A.M. Wednesday Women's Circle (414)

- 10:00 A.M. Thrift Shop Open until 3 P.M.
- 4:15 P.M. Cherub Choir (Spellman Hall)
- 4:45 P.M. Children's Choir (Spellman Hall)
- 7:00 P.M. Handbell Rehearsal (Spellman Hall)
- 7:00 P.M. Worship Band Rehearsal (Sanctuary)
- 7:00 P.M. Gathering of Men (Offsite)

Thursday, November 14

- Thrift Shop Closed
- 10:00 A.M. Tech Time with Lynn via Zoom
- 7:00 P.M. Boy Scouts (Spellman Hall)
- 7:00 P.M. Chancel Choir Rehearsal (Music Room)
- 7:00 P.M. Celebrate Recovery (The Site)

Friday, November 15

- 10:00 A.M. Thrift Shop Open until 3 P.M.

Saturday, November 16

- 9:00 A.M. Thrift Shop Open until noon

Sunday, November 17

- 8:30 A.M. Nursery care (109)
- 9:00 A.M. Turkey Drop-off (Portico)
- 9:30 A.M. Traditional Worship / WeeConnect 3-4 yrs  
KidsConnect (K-5<sup>th</sup> grade)
- 9:30 A.M. Confirmation Community Gathering (407)
- 10:45 A.M. Journey Class (Spellman Jr.)
- 11:00 A.M. Contemporary Worship (Sanctuary),  
Young Children & Worship (Chapel)
- 4:00 P.M. Vespers (Chapel)
- 5:00 P.M. Youth Choir (Music Room)
- 5:30 P.M. Youth Group (Spellman Hall)